



**CHAGODA
GLASS FACTORY**



Yesterday / Today / Tomorrow

HISTORY

**Chagoda Glass Factory
was founded in 1931**

The convenient geographical location and availability of railway access contributed to the dynamic development of the enterprise.

Initially, the factory was engaged in the plate glass production.

**In March 1999, Chagoda Glass Factory & Co.LLC
was reconstructed with support of the investors
and redesigned for the production
of glassware.**

By 2003, the annual output reached
740 million units of glassware.



1974



HISTORY

Due to increased demand for the factory's products, the decision was made to set up a subsidiary enterprise: CHSZ-Lipetsk LLC. In June 2006, a new glass factory was registered being the first resident of the exclusive economic zone. The first and second workshops for production of glass bottles were launched within an interval of 1 year.

Since 2008, CHSZ Group of Companies has been one of the largest glassware manufacturers in Russia.

CHSZ maintains its share of glassware output at **11,5%** of the total glassware production in Russia.

Both factories are fitted with high-tech equipment produced by such manufacturing companies as **Parkinson-Spencer LTD** (Great Britain), **TIAMA** (France), **AGR** (America), **LWN Lufttechnik** (Germany), **Zecchetti** (Italy), **Sklostroj**, **Moravia Glass Technology** (Czech Republic).



Only advanced technologies are used in production.

The production capacities of the factories ensure a total output of up to

1.5 billion
units of glassware per year

or **1640** tons of glass per day

CHSZ Group of Companies has developed and mastered the production of 363 types of glassware

The enterprises of CHSZ Group of Companies effectively produce glassware for such industries as

- brewing
- distillery
- food production
- and other industries

OUR ADVANTAGES

Today we stake on quality, competitiveness and efficiency of production.



Our glassmakers team has over 20 years of experience



The new glass-melting furnaces are a guarantee of uninterrupted operation for the next 10 years



Up-to-date European equipment for the production of glassware and its control



Our inspectors monitor all important parameters of the glassware



Control of drop weight on all production lines



Sheltered warehouses with a capacity for 120 million glass bottles



Automated packaging with heat shrinkage



High-standard mould area with programmed numerical control tools



Asphalted storage sites for keeping 270 million glass bottles

OUR ADVANTAGES



Competitive logistics due to the optimal location of the factories in terms of distance from the two major cities: Moscow and Saint Petersburg



Own access railway tracks at both factories



On the average, we load out **60** trucks per day

During the high season, we load out up to **90** trucks per day

The high level of production and quality allows us to work with transnational companies, such as: **Carlsberg, AB InBev Efes, Heineken, Moscow Brewery Company CJSC,**



OUR CONSUMERS



CHSZ & CO.

2 furnaces

each with a capacity of
300 tons/day

1 furnace

with a capacity of
200 tons/day

CHSZ & Co. is equipped
with Sklostroj glass-forming
machines (Czech Republic)



3 machines AL1110-2-2
and **5** machines AL-1110-2-1



Today,
CHSZ-
Chagoda
produces

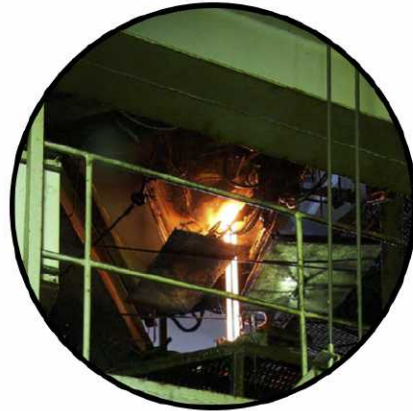
1 590 000
bottles
per day

1 104
bottles
per minute

CHSZ-LIPETSK

2 furnaces

each with a capacity of
420 tons/day



Sklostroj sectional machines
(Czech Republic) are used
for the production of glassware



4 machines AL-1110-2-2
and **4** machines AL1112-2-2



Today,
CHSZ-
Lipetsk
produces

2389 824
bottles
per day

1660
bottles
per minute

QUALITY CONTROL

Operators and adjusters of glass-forming machines ensure the production quality control to meet the consumers' high requirements.

All defects are eliminated at the early stage of production.

The production lines are fitted with **TIAMA inspection equipment** (France).

Control machines M1, I-CAM, M-CAL, MultiP, Multi 4 are installed.

The technical control laboratories are fitted with the equipment produced by the American company **AGR**.

The technical units include: internal pressure and vertical load tester (RPT2), impact resistance tester, friction tester (TT), hot spraying thickness analyzer (HCMS) for the bottle body and the bottle neck ring (HCMS), geometric parameters optical analyzer (VBG), foreign inclusions analyzer (Seedlab).

The acceptance quality control of finished products for geometric parameters in terms of nominal full capacity, heat resistance, internal pressure resistance and fritting quality is carried out by highly qualified specialists of the QC department.



We work 24/7



OUR POLICY

Our senior management demonstrates leadership and commitment to food safety, regulatory compliance, environmental safety compliance, meeting customers' requirements and expectations through communicating the information based on the Policy.

General objectives: The quality, safety and ecology objectives are developed for the principal lines of business. They are grounded, resourced and monitored. Their achievement is a mission assigned to the top managers at all levels.

Quality management system:
The process approach to enterprise management has been introduced. The employees' work is managed according to the documented approved rules.

Environmental management system:
The company's operation is aimed at reducing harmful effects of production on the environment. The significant environmental considerations are highlighted and monitored.

Food safety management system:
The overall goals and activities of the organization are designed to secure safety of glass containers for human health.

One may view the Policy-related documents in more detail by clicking the buttons below

[CHSZ & Co. Policy](#)

[CHSZ-Lipetsk Policy](#)

CERTIFICATES

The current management systems established at the enterprise comply with the international standards:

CHSZ-Lipesk LLC:

GOST R ISO 9001 Quality Management System;
GOST R ISO 14001 Environmental Management Systems;
FSSC 22000 Food Safety System Certification Scheme includes the following elements: ISO 22000:2018, ISO/TS 22002-4:2013 and FSSC 22000 Supplementary Requirements (version 5.0).

CHSZ & Co. LLC:

GOST R ISO 9001 Quality Management System;
GOST R ISO 14001 Environmental Management Systems;
GOST R ISO 22000 Food Safety Management System.
Requirements for Organizations Involved in the Food Production Chain.

For more information about the Certificates, click the buttons below

[CHSZ & Co. Certificates](#)

[CHSZ-Lipetsk Certificates](#)

OUR PRODUCTS



OUR PRODUCTS



OUR PRODUCTS



OUR PRODUCTS



OUR PRODUCTS



CHSZ & Co. LLC
Vologda Region,
settlement of Chagoda
Tel.: +7 (81741) 214-40

CHSZ-Lipetsk LLC
Lipetsk Region,
settlement of Matyrsky
Tel.: +7 (4742) 51-53-00,
+7 (4742) 51-52-00

www.chszlp.ru